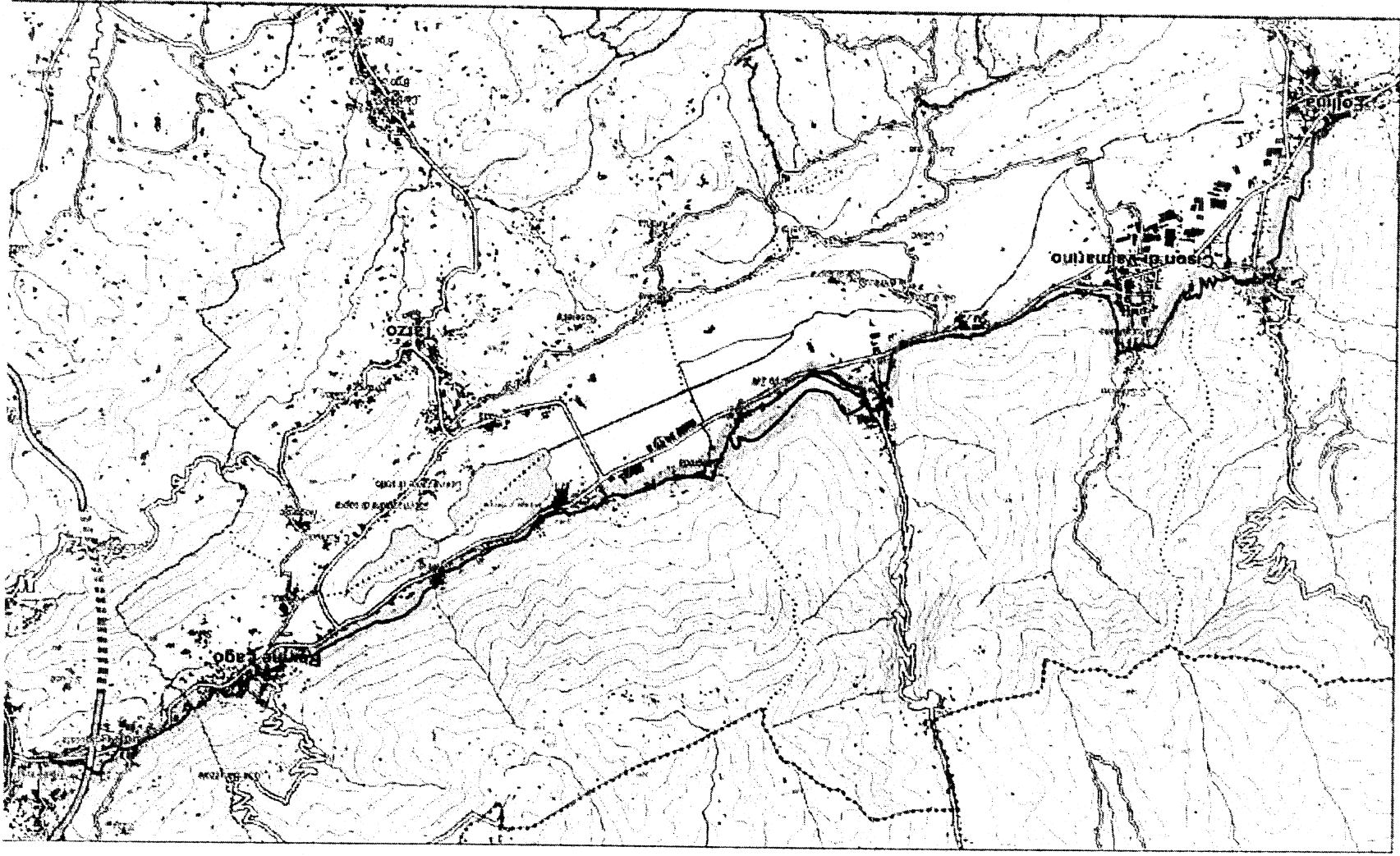
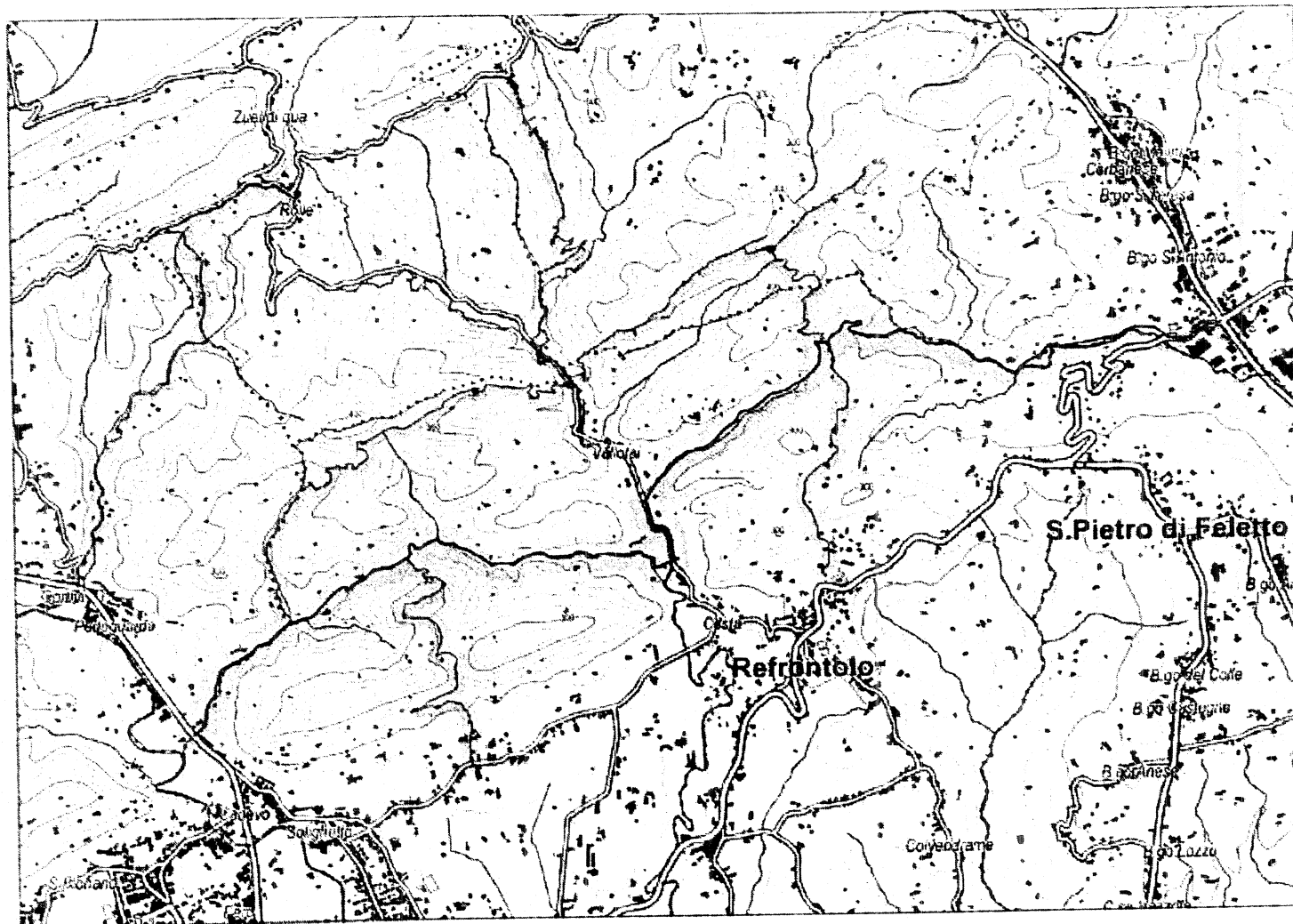


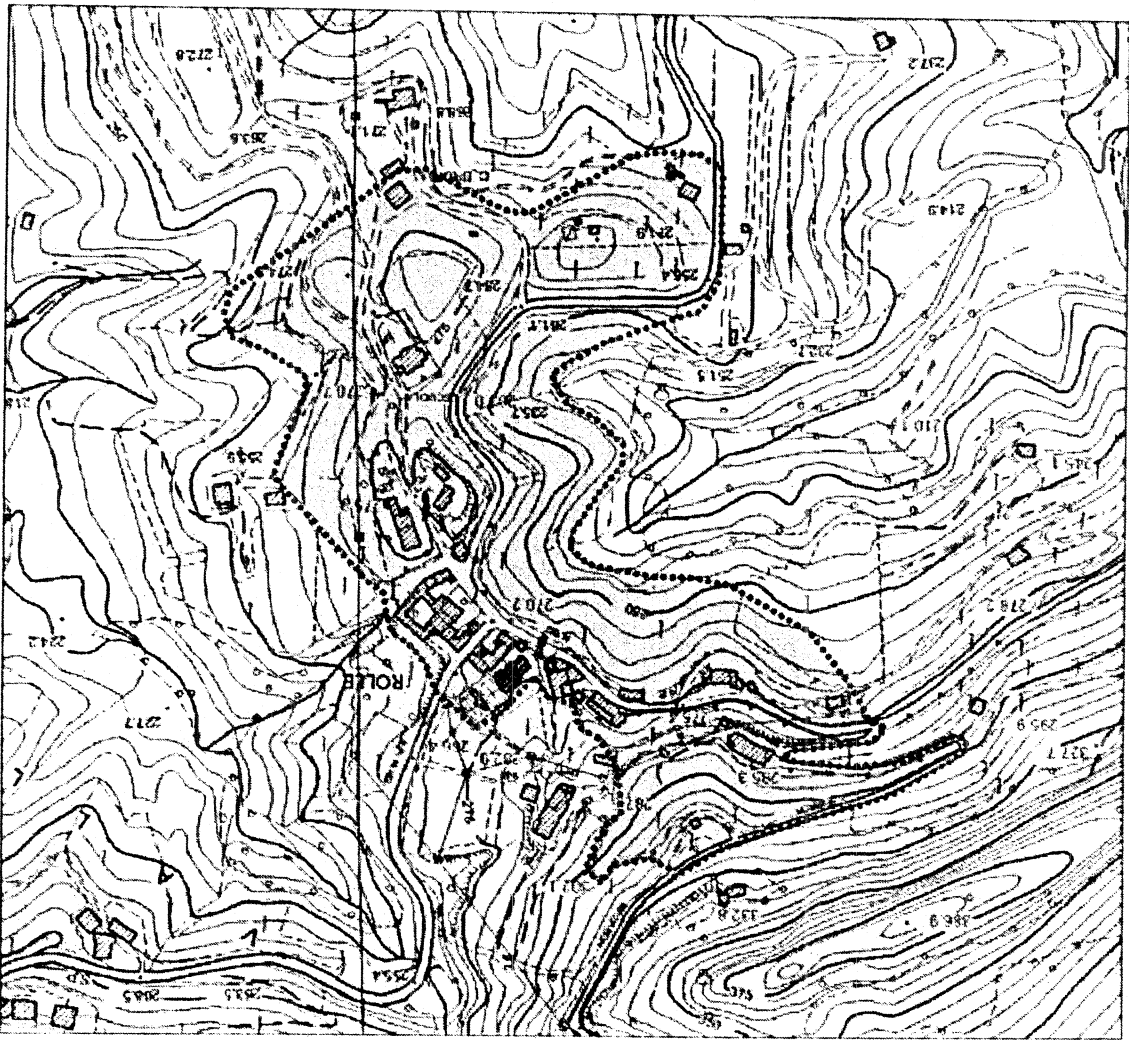


a) VIABILITÀ STORICA DELLA VALSANA. "STRADA MAESTRA"



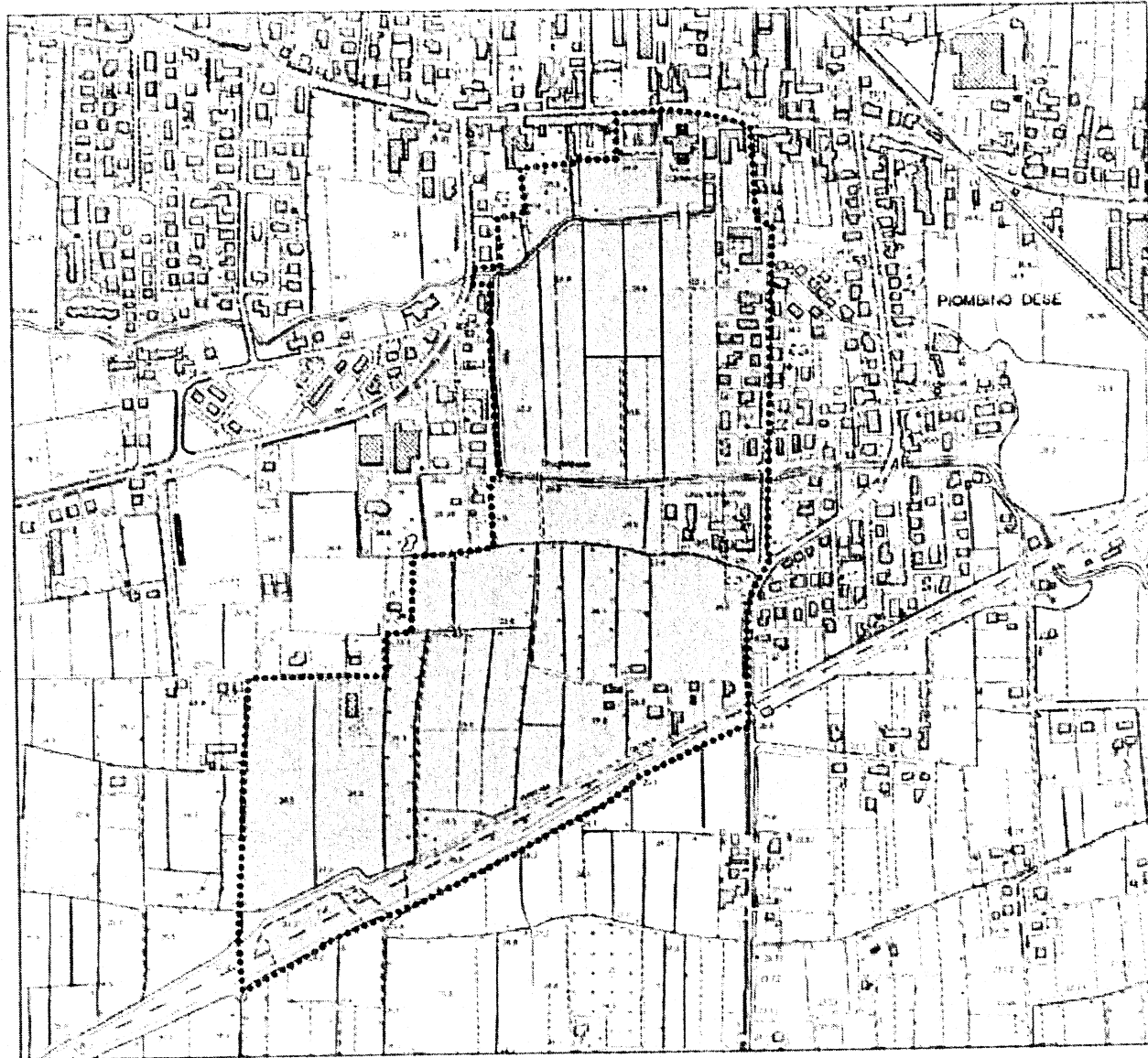
b) SISTEMA DELLE COLLINE A CORDONATE DELL'ALTA MARCA TREVIGIANA

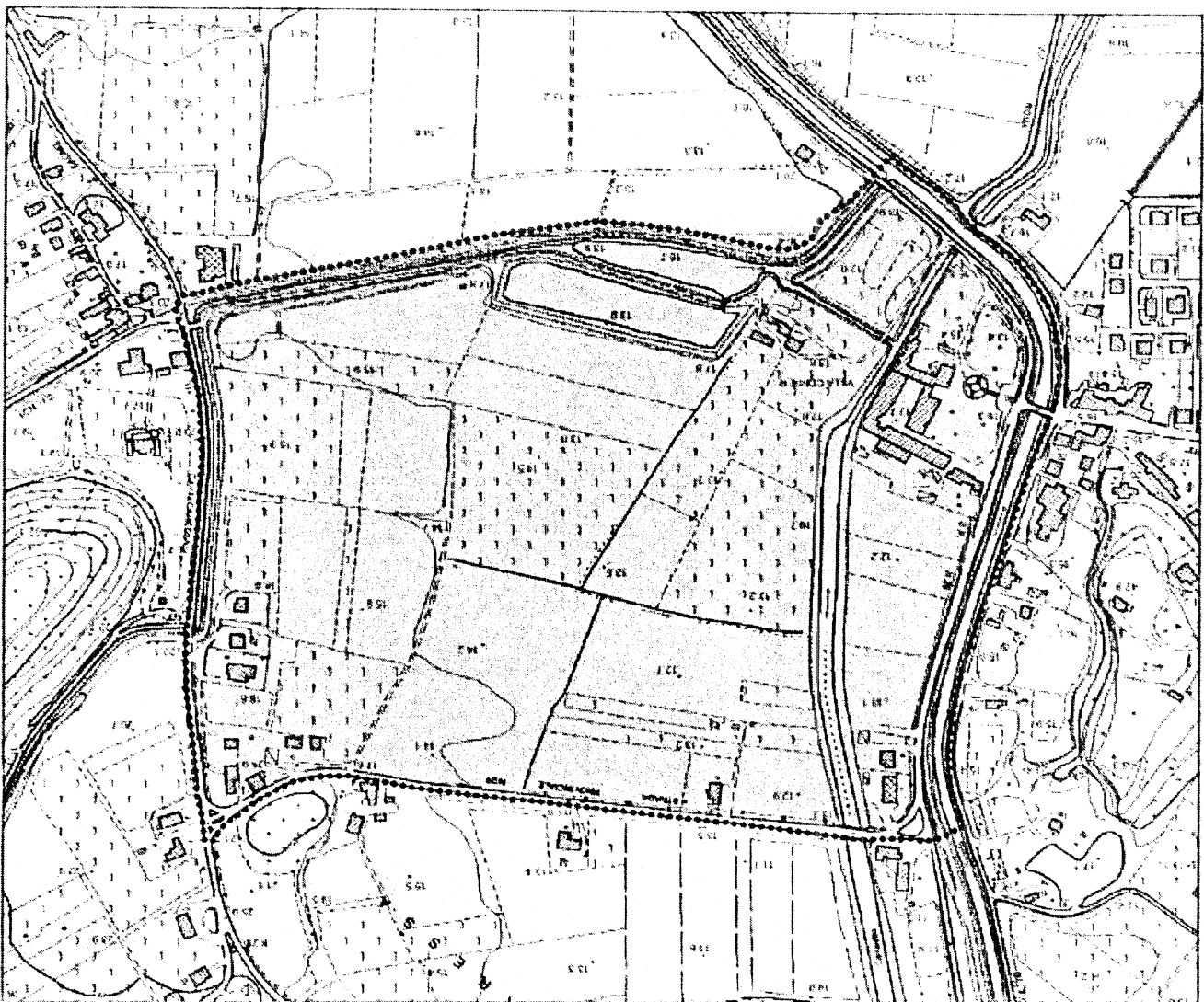




C) SCUOLA ELEMENTARE DELLA FRAZIONE DI ROLLE DEL COMUNE DI VALMARINO

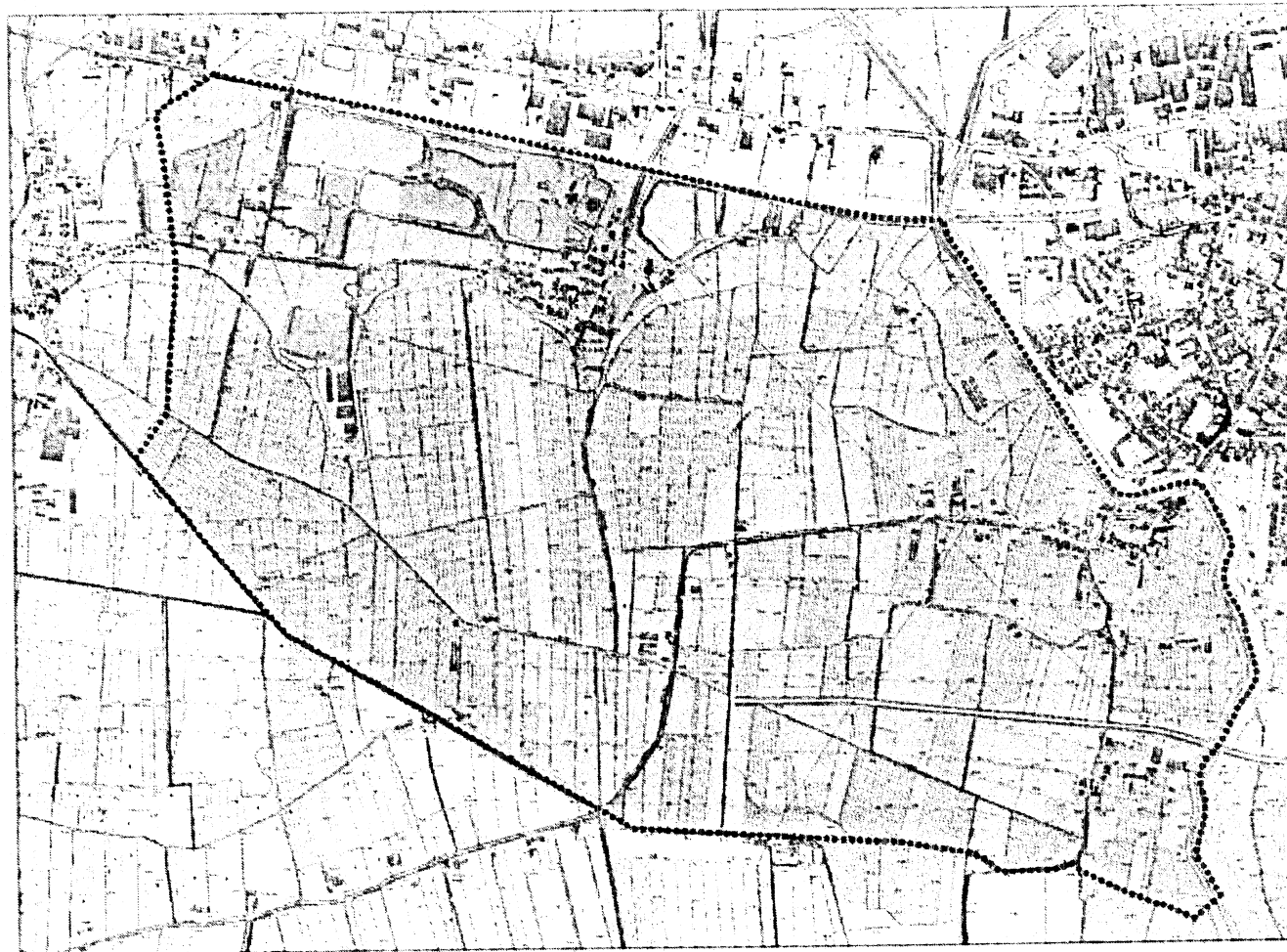
d) COMPENDIO DI VILLA CORNARO A PIOMBINO DESE

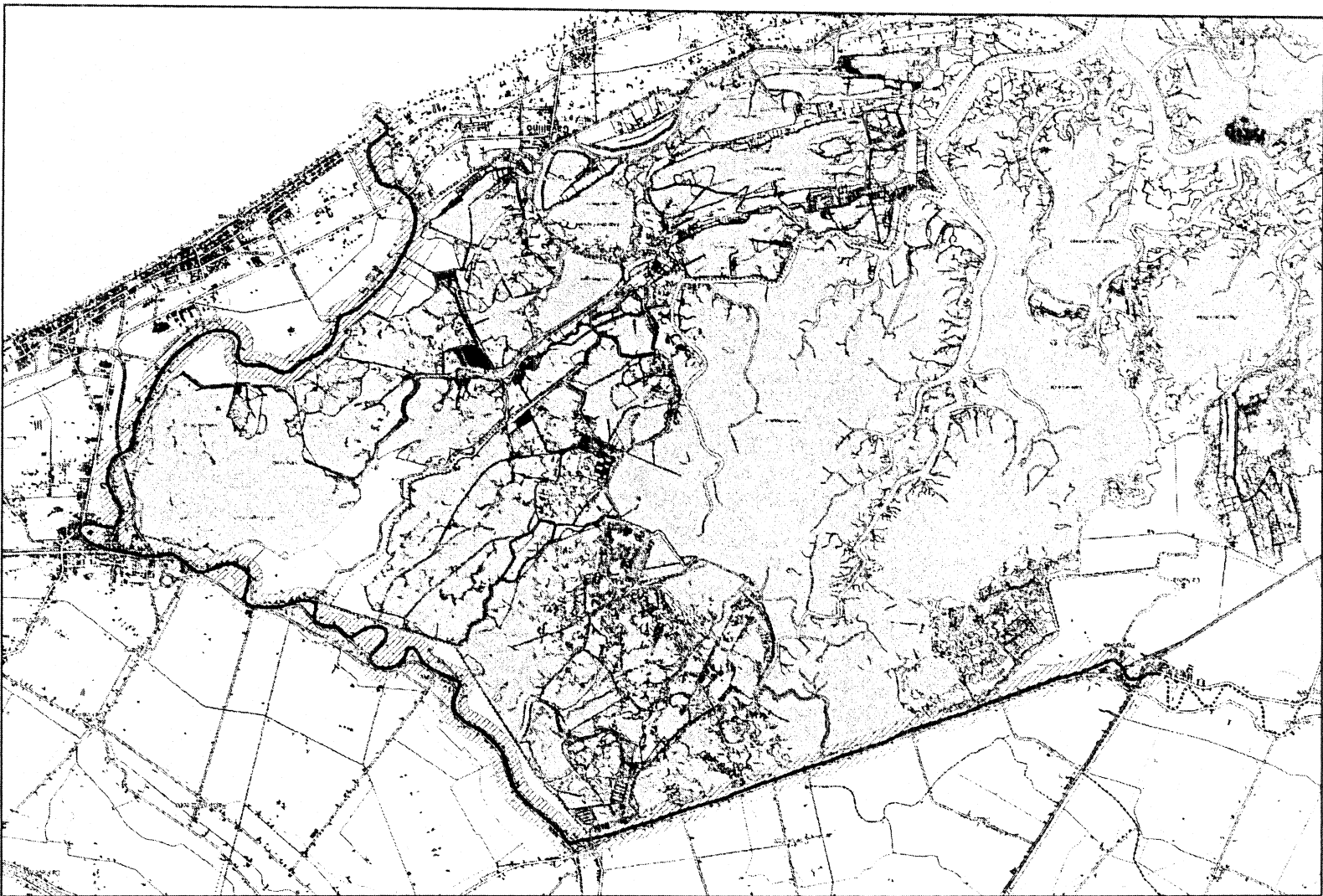




e) BARCHESSE DI VILLA LANDO, CORRER A LOZZO ATESTINO

f) FRAZIONE DI VILLABELLA E IL CONTESTO FIGURATIVO DI VILLA GRITTI A SAN BONIFACIO





9) TAGLIO DEL SILE

ALLEGATO C Dgr n.

del

*h) IDROVORE DI GORO E CAVANELLA*



*Regione Emilia-Romagna*



!) ANTICA VIA POPILIA COSTIERA. TRATTO DAL PO DI GORO AL PO DI VENEZIA

