





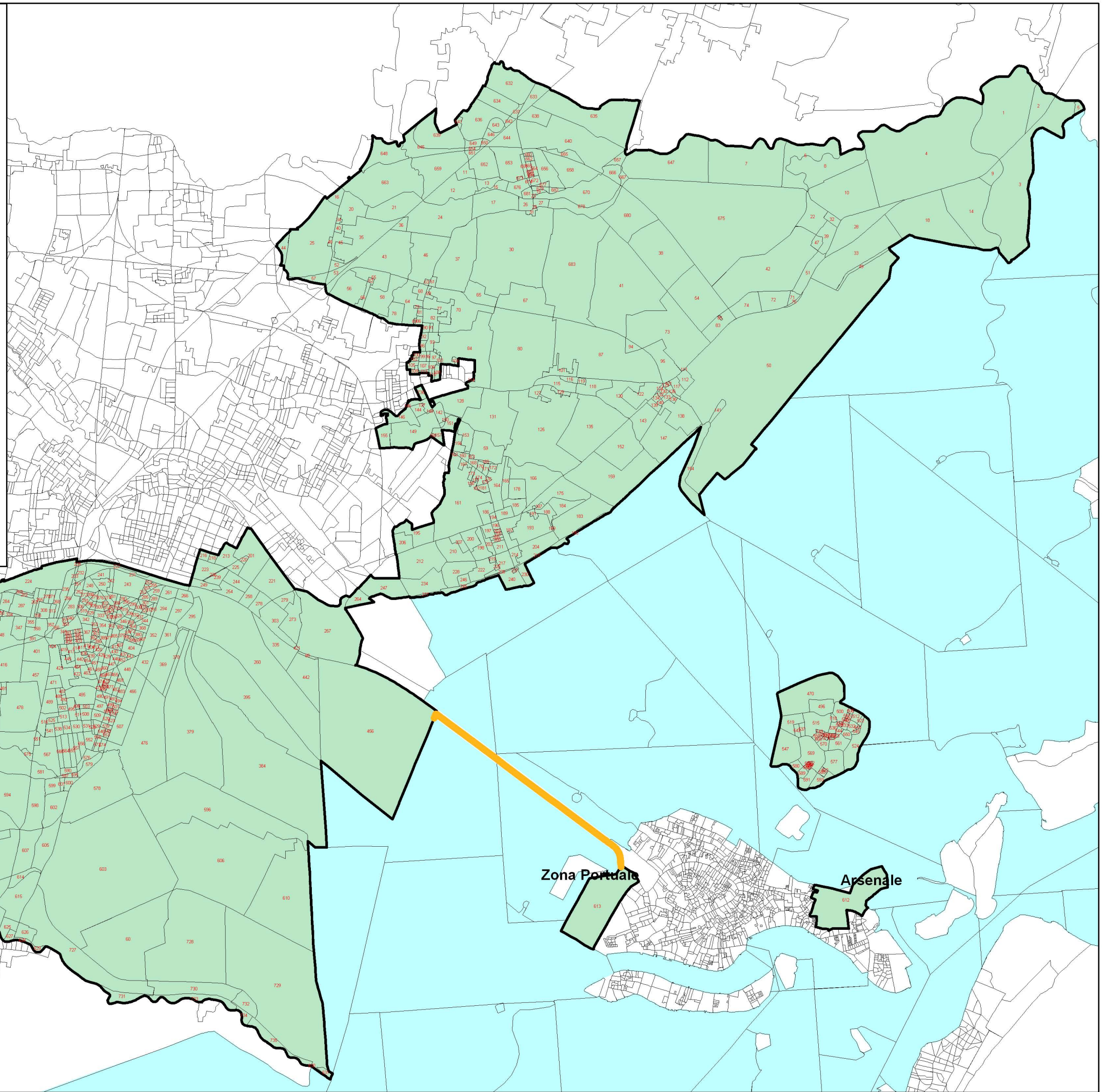
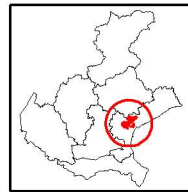


**Orientamenti in materia di aiuti di stato
a finalità regionale 2007-2013
Punto 30 lett. (h)
(2006/C 54/08)**

**Comune di Venezia:
Porto Marghera, Via Torino, Campalto,
Murano, Arsenale, Zona Portuale.**

Legenda

-  Ponte della Libertà
-  Sezioni di censimento
-  Area eleggibile
-  Laguna



Zona Portuale

Arsenale